



The Halton Resource Connection

PHYSICAL DISTANCING

INFORMATION AND INSPIRATION

Excerpt from Operational Guidance during COVID-19 Outbreak, Ministry of Education

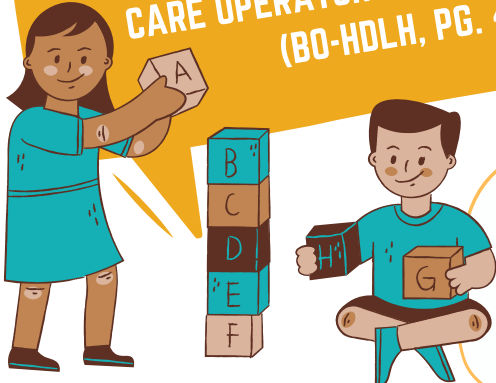
“The Ministry recognizes that physical distancing between children in a child care setting is difficult and encourages child care staff and providers to maintain a welcoming and caring environment for children.” (Pg. 21)



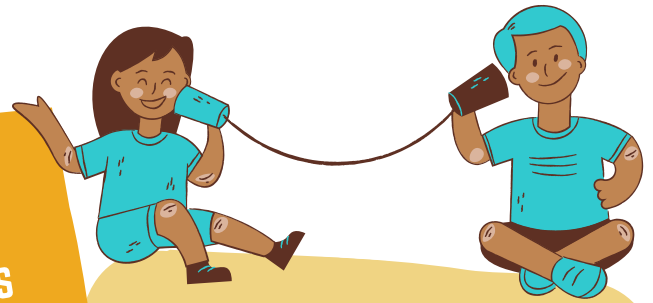
HOW CAN WE PROMOTE PHYSICAL DISTANCING IN CHILD CARE?

- ✓ Provide activities and materials on bins/trays to promote individual play
- ✓ Use chairs at the tables to show how many children at each table; space chairs out around table for optimal distancing
- ✓ Place mats on the floor to create individual play spaces
- ✓ Use visuals to explain physical distancing e.g. markings like arrows on the floor to stand on or follow
- ✓ Stagger transition times/utilize small groups as much as possible
- ✓ Use redirection to promote spacing between children's activities e.g. "let's try digging over here"
- ✓ Move as much of the day outside as possible to allow for more space
- ✓ At rest time, if there isn't room to adequately space out cots, children can be placed head to toe or toe to toe.





"ONCE THE CHILDREN AND STAFF WERE SCREENED AND IN THEIR 'PODS' (CLASSROOMS), THEY WERE TREATED AS FAMILY UNITS AND WERE ABLE TO INTERACT JUST AS WE DO WITH OUR OWN FAMILIES WITHIN HOUSEHOLDS." - EMERGENCY CHILD CARE OPERATOR IN HURON COUNTY" (BO-HDLH, PG. 4)



PHYSICAL DISTANCING
DOES NOT MEAN
SOCIAL DISTANCING



WHAT COULD YOU TRY IN YOUR PROGRAM TO "PROMOTE" PHYSICAL DISTANCING INSTEAD OF "POLICING" IT?

ADDITIONAL RESOURCES

[Operational Guidance document](#)

[School age Operational Guidance document](#)

[Building on How Does Learning Happen](#)

[Reopening Childcare FAQs](#)

